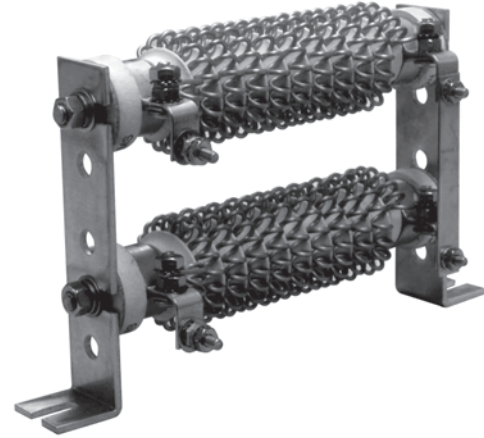


# Avtron Wirewound Resistors

## Type AWR

- Low temperature coefficient elements for more stable resistance
- Double helical design for efficient cooling ensures long life
- Massive, high temperature ceramic core resists shock and vibration



Two Avtron Wirewound Resistors with panel mount brackets



Six Avtron Wirewound Resistors with protective enclosure

- Withstands severe short-time overloads
- Reliable, stainless steel elements, terminals and terminal hardware
- Industry standard size for quick replacement of other major brands

### Typical Applications include:

- Dynamic Braking Resistors
- Load Discharge Resistors
- Ballast Resistors
- High Resistance Grounding
- Industrial Convection Heaters



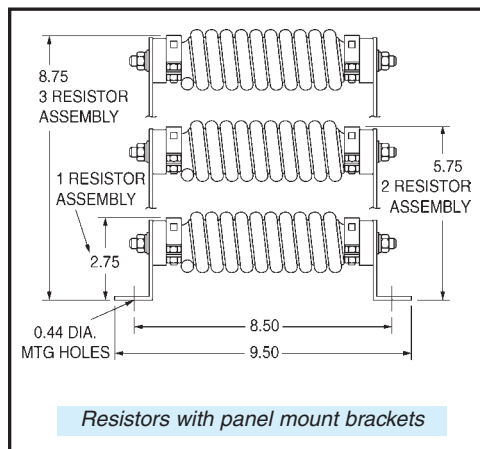
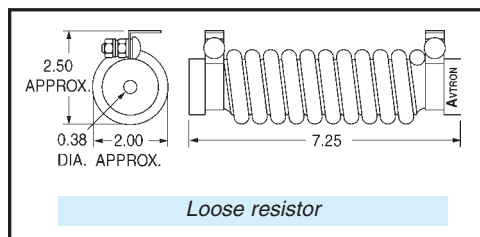
# Avtron Wirewound Resistors

**Avtron Wirewound Resistors** are designed for low current industrial applications from 1 amp to 32 amps continuous with convection cooling. Heavy-duty construction allows higher ratings for intermittent duty applications.

Engineered for reliability, these resistors feature all stainless steel construction including the element, terminals and terminal hardware. Avtron Wirewound Resistors can be supplied loose, preassembled with brackets, or fully assembled in indoor or outdoor enclosures. This simplifies and speeds installation to save time and money.

To further improve functionality, these resistors can be provided with optional wiring and control systems. Contact your Avtron sales engineer for total support in selecting resistors, assemblies, and custom configurations for your application.

## Outline Drawings



Avtron Part Number	Resistance in OHMS @25°C*	Continuous AMP Capacity @375°C Rise	Continuous WATTAGE
AWR25	0.25	32.0	256
AWR30	0.30	31.0	288
AWR35	0.35	29.0	294
AWR50	0.50	27.0	365
AWR70	0.70	22.0	339
AWR100	1.00	18.0	324
AWR140	1.40	15.5	336
AWR150	1.50	15.0	338
AWR190	1.90	13.3	336
AWR200	2.00	13.0	338
AWR220	2.20	12.5	344
AWR250	2.50	12.0	360
AWR260	2.60	12.0	374
AWR320	3.20	10.8	373
AWR350	3.50	10.5	386
AWR390	3.90	10.0	390
AWR400	4.00	10.0	400
AWR450	4.50	9.2	381
AWR480	4.80	8.8	372
AWR500	5.00	8.5	361
AWR550	5.50	8.0	352
AWR580	5.80	7.7	344
AWR600	6.00	7.6	347
AWR650	6.50	7.4	356
AWR700	7.00	7.3	373
AWR800	8.00	7.1	403
AWR850	8.50	7.0	417
AWR860	8.60	6.8	398
AWR1000	10.00	6.2	384
AWR1100	11.00	6.0	396
AWR1150	11.50	5.9	400
AWR1170	11.70	5.9	407
AWR1200	12.00	5.8	404
AWR1500	15.00	5.3	421
AWR2000	20.00	4.6	423
AWR2700	27.00	3.6	350
AWR3600	36.00	3.0	324
AWR4500	45.00	2.5	281
AWR6200	62.00	2.0	248
AWR8000	80.00	1.8	259
AWR8100	81.00	1.8	262
AWR10000	100.00	1.6	256
AWR12500	125.00	1.4	245
AWR15000	150.00	1.3	254
AWR17500	175.00	1.2	252
AWR20000	200.00	1.1	242
AWR25000	250.00	1.0	250

\* Non-standard ohmic values also available. Consult factory.

Specifications subject to change without notice. All dimensions are in inches.

Printed in U.S.A.

Bulletin 407  
Rev. C



6255 HALLE DRIVE, CLEVELAND, OH, U.S.A. 44125 • (1) 216-573-7600 • FAX: (1) 216-573-5953  
E-MAIL: resistors@avtron.com • HOME PAGE: www.avtron.com