


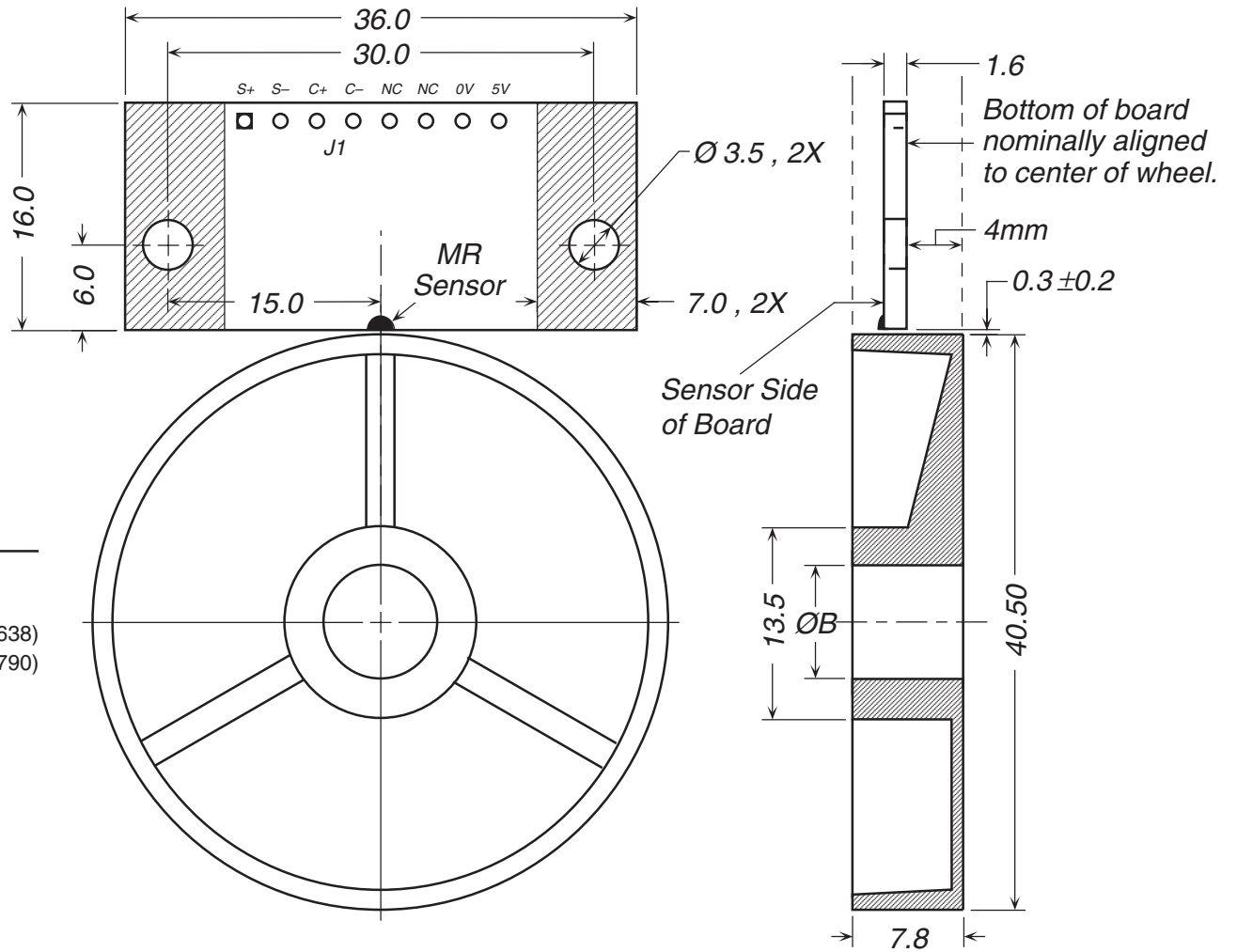
Wheel ID Table (ØB)

KAS1241-128-	Nominal ID (mm)	ID Tolerance ISO	ID Tolerance ±mm
06	6.00	H7	+0.01, -0.00
08	8.00	H7	+0.01, -0.00
10	10.00	H7	+0.01, -0.00
25	6.35	—	-0.01, -0.03
31	7.94	—	-0.02, -0.03
38	9.53	—	-0.02, -0.03

Wheel Reference Specifications

Mass	8	grams
Inertia	9	gram cm ²
Tensile Strength	480	kg/cm ² (ASTM D-638)
Flexural Strength	840	kg/cm ² (ASTM D-790)
Rockwell Hardness	R110	ASTM D-785

 Sensor mounting area. Free of components and traces (both sides).



REFERENCE	DIMENSIONS IN MILLIMETERS TOLERANCES UNLESS OTHERWISE SPECIFIED		MATERIAL		admotec	
			As shown.		ADMOTEC INC., LEBANON NEW HAMPSHIRE USA	
			HEAT TREAT		KAS1241 Encoder Outline & Mounting	
			Not applicable.			
			FINISH		7310-214	
			Not applicable.			
			DRAWN	D Robinson	DATE	4 May 07
			CHECKED		DATE	
			APPROVED		DATE	
THIS DRAWING IS THE PROPERTY OF ADMOTEC INC. IT MAY NOT BE COPIED, USED OR DISCLOSED FOR ANY PURPOSE WITHOUT WRITTEN PERMISSION BY ADMOTEC INC.			DRAWING SIZE		REVISION	
			A		—	
			SCALE 2:1		SHEET 1 OF 1	