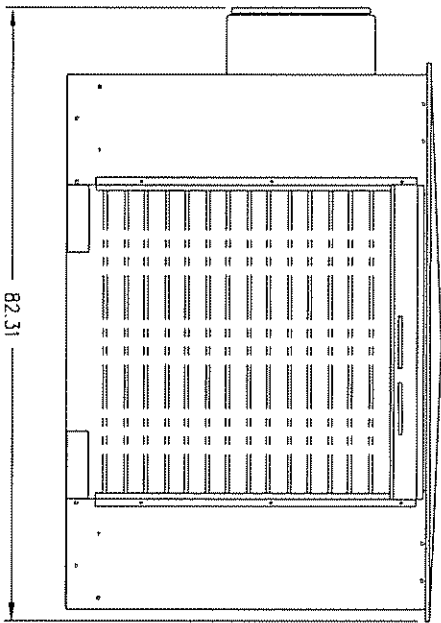
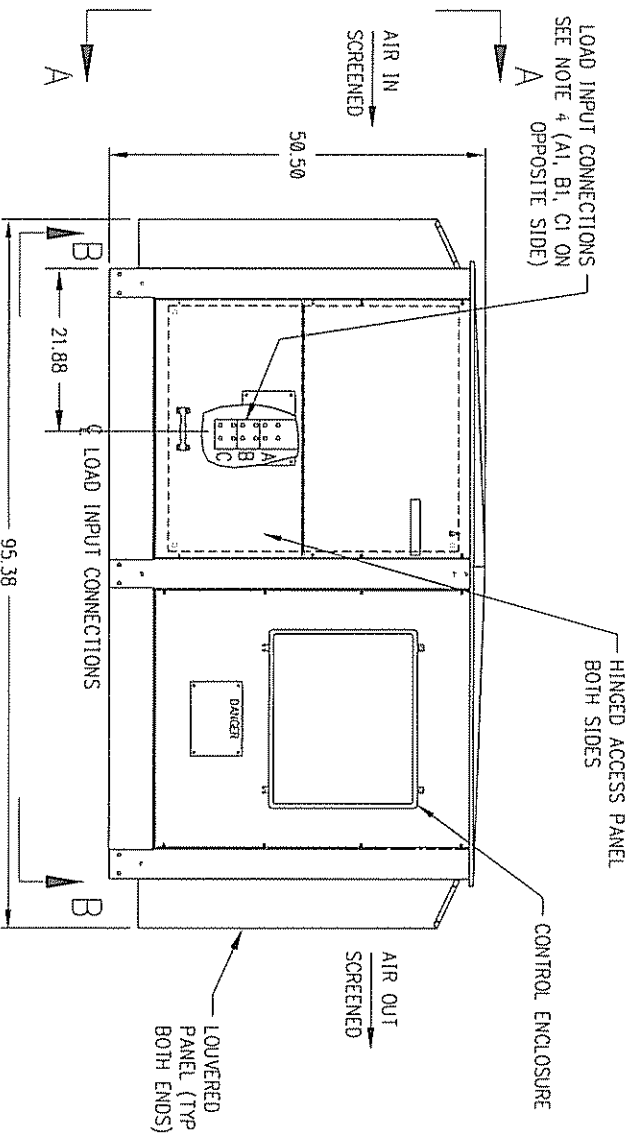


**AVTRON MODEL K580
OUTDOOR TRAILER/TRAILER READY LOAD BANK
OUTLINE DRAWING SET**



4. FOR SINGLE VOLTAGE APPLICATIONS, CONNECT ONLY TO A, B, C. FOR DUAL VOLTAGE APPLICATIONS, CONNECT HIGHER VOLTAGE TO A, B, C ONLY. CONNECT LOWER VOLTAGE TO A, B, C, & A1, B1, C1. REFER TO SCHEMATIC DIAGRAM.
3. AS A GENERAL GUIDE, THE MINIMUM CLEARANCE REQUIRED FROM ANY OBSTRUCTION IS: 6 FEET ON INLET END, 3 FEET ON SIDES AND 8 FEET ON EXHAUST END. REVIEW MANUAL FOR DETAILED INSTALLATION AND SITE CONDITIONS.

2. ALL DIMENSIONS ARE APPROX.
 1. WEIGHT: APPROX 2000 LBS

NOTES:

THIS DOCUMENT CONTAINS PROPRIETARY INFORMATION OF AVTRON MFG., INC. AND MAY NOT BE DISCLOSED TO OTHERS OR USED FOR MANUFACTURING PURPOSES WITHOUT THE WRITTEN CONSENT OF AVTRON MFG.

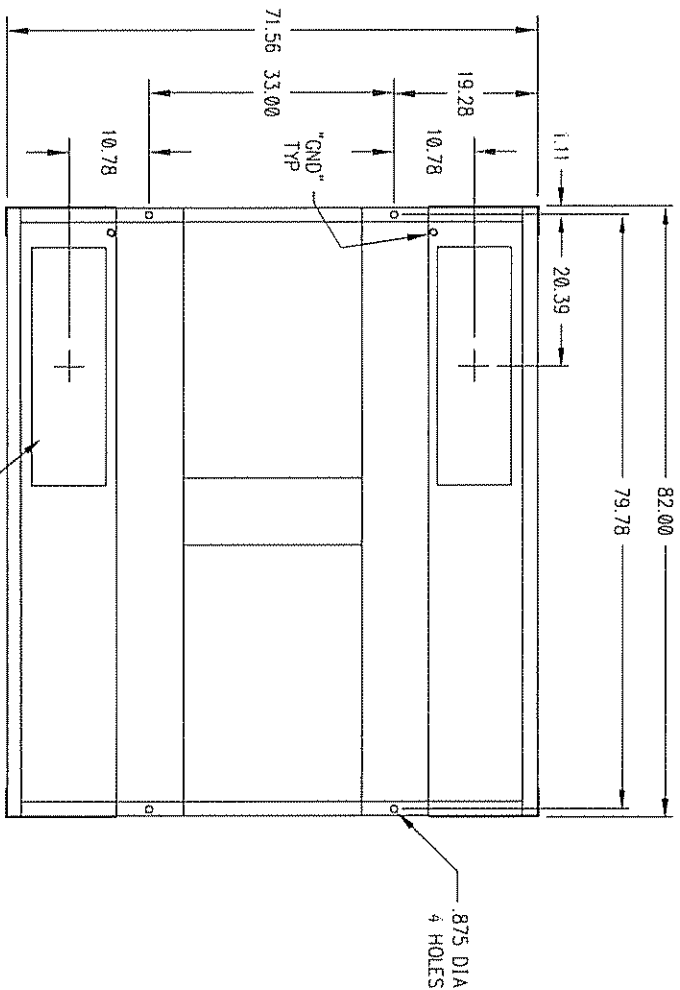
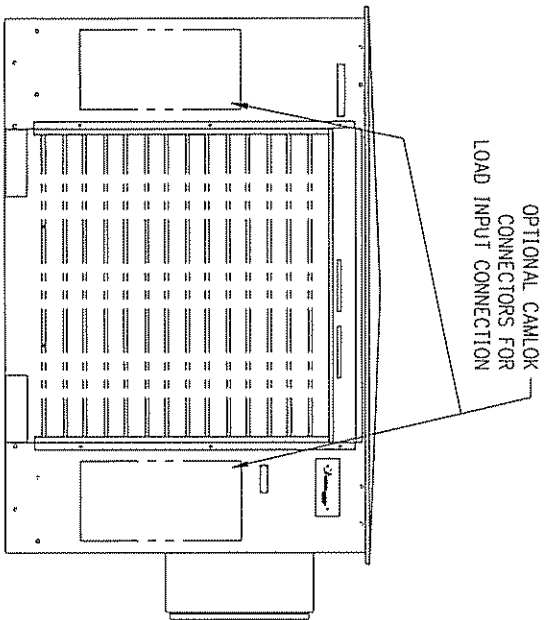
REV	NO.	DATE	DESCRIPTION	BY	CHK'D
B	1	95/28	WAS 98/25 (REMOVED)	JFL/AUTO	D/KOZARI
A	1	98/05	REMOVED FAN FROM FACTORY UNIT	JFL/AUTO	D/KOZARI
		8/5/98	ACCESS PANEL	JFL/AUTO	D/KOZARI
			CHANGED		

DATE	3/9/98
DESIGNED BY	JFL/AUTO
APPROVED BY	MITCHELL
SCALE	1/16

AVTRON MANUFACTURING, INC.
 LOAD BANK, OUTDOOR

BRANING RANGER
 SB2773
 SH1 1 OF 2
 OUTLINE DRAWING

FOR APPLICATION ENGINEERING USAGE ONLY



FOR APPLICATION ENGINEERING USAGE ONLY

2. ALL DIMENSIONS ARE APPROX.
1. WEIGHT:

NOTES:

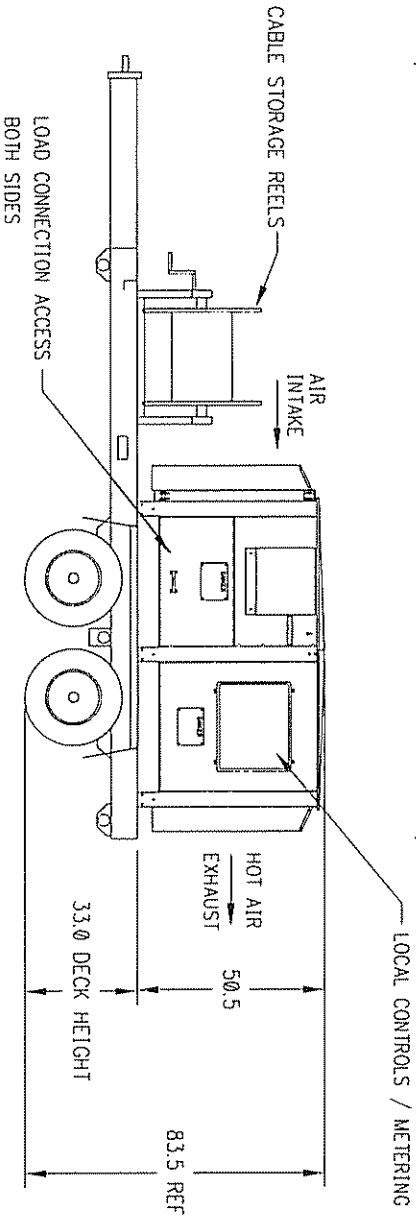
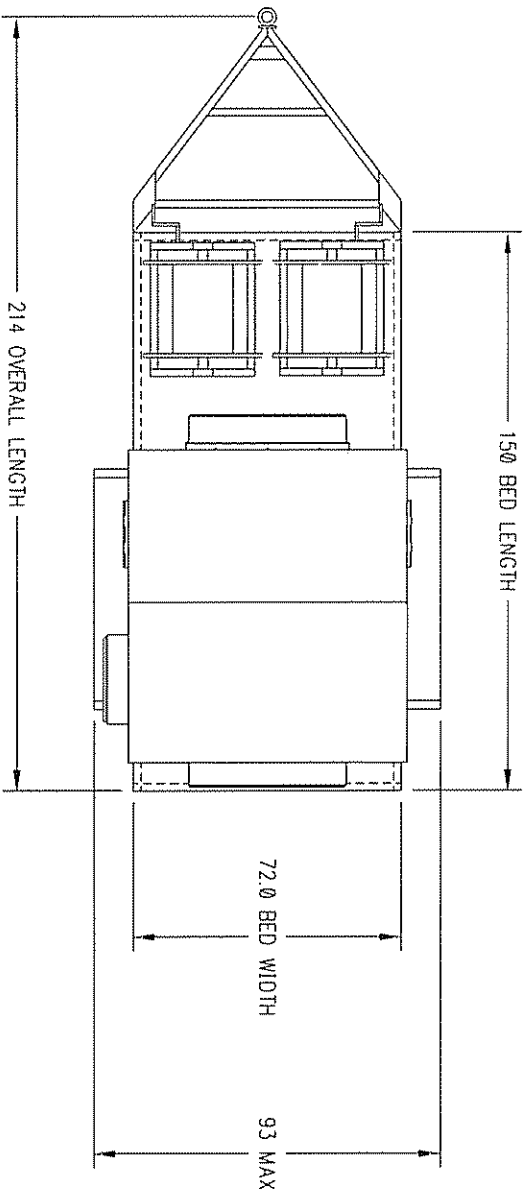
THIS DOCUMENT CONTAINS PROPRIETARY INFORMATION OF AVTRON MFG. INC. AND MAY NOT BE DISCLOSED TO OTHERS OR USED FOR MANUFACTURING PURPOSES WITHOUT THE WRITTEN CONSENT OF AVTRON MFG.

DESIGN	DATE	BY	CHKD
3/9/98	3/10/98	J. FLAUTO	J. FLAUTO
3/9/98	3/10/98	J. FLAUTO	J. FLAUTO
3/9/98	3/10/98	J. FLAUTO	J. FLAUTO

DESIGN	DATE	BY	CHKD
3/9/98	3/10/98	J. FLAUTO	J. FLAUTO
3/9/98	3/10/98	J. FLAUTO	J. FLAUTO
3/9/98	3/10/98	J. FLAUTO	J. FLAUTO

AVTRON MANUFACTURING, INC.
LOAD BANK, OUTDOOR

SB2773
SHT 2 OF 2
OUTLINE DRAWING



CABLE WT.	HITCH WT.	%GVW
0	71 LBS.	1.5%
MIN 750 LBS.	370 LBS.	7%
2300 LBS.	987 LBS.	15%

7. A MINIMUM OF 750 LBS. OF CABLE OR BALLAST IN THE CABLE REEL AREA IS REQUIRED FOR SAFE TOWING ABOVE 35 MPH. LESS HITCH WEIGHT WILL CAUSE INSTABILITY AT HIGH SPEEDS.
6. THE FOLLOWING TABLE LISTS THE APPROXIMATE HITCH WEIGHT ACHIEVED BY LOADING CABLE ON THE REELS. CAUTION SHOULD BE EXERCISED TO AVOID EXCEEDING THE TOWING VEHICLE'S HITCH CAPACITY.
5. 2300 LBS MAX CABLE STORAGE CAPACITY
4. TRAILER RATING: 7000 LBS GVWR
3. DIMENSIONS ARE IN INCHES.
2. ALL DIMENSIONS ARE APPROX.
1. WEIGHT: 4375 LBS. WITHOUT CABLES

THIS DOCUMENT CONTAINS PROPRIETARY INFORMATION OF AVTRON MFG., INC. AND MAY NOT BE DISCLOSED TO OTHERS OR USED FOR MANUFACTURING PURPOSES WITHOUT THE WRITTEN CONSENT OF AVTRON MFG.

ECN NO.	REV	CHANGED	CHG'D	OK'D

DATE	BY	SCALE
11/2/98	ZMECEK	NONE
11/2/98	ZMECEK	NONE

AVTRON MANUFACTURING, INC.
INDEPENDENCE, OH
TRAILER MOUNTED
LOAD BANK SYSTEM

DRAWING NUMBER
SB2847
OUTLINE DRAWING

FOR APPLICATION ENGINEERING USAGE ONLY

- 7. A MINIMUM OF 530 LBS OF CABLE OR BALLAST IN THE STORAGE BOX IS REQUIRED FOR SAFE TOWING ABOVE 35 MPH. LESS HITCH WEIGHT WILL CAUSE INSTABILITY AT HIGH SPEEDS.
- 6. THE FOLLOWING TABLE LISTS THE APPROXIMATE HITCH WEIGHT ACHIEVED BY LOADING CABLE IN THE STORAGE BOX. CAUTION SHOULD BE EXERCISED TO AVOID EXCEEDING THE TOWING VEHICLE'S HITCH CAPACITY.

CABLE WEIGHT LBS	HITCH WEIGHT LBS	% GWW
0	79	1.82%
530	340	7.02% MIN
1000	571	10%
1800	963	15.87%
2000	1062	16.87%

5. 2000 LBS MAX CABLE STORAGE CAPACITY IN BOX.
 4. TRAILER RATING: 7000 LBS GVWR
 3. DIMENSIONS ARE IN INCHES.
 2. ALL DIMENSIONS ARE APPROX.
 1. WEIGHT: 4500 LBS, WITHOUT CABLES

NOTES:
 THIS DOCUMENT CONTAINS PROPRIETARY INFORMATION OF AVTRON MFG. INC. AND MAY NOT BE DISCLOSED TO OTHERS OR USED FOR MANUFACTURING PURPOSES WITHOUT THE WRITTEN CONSENT OF AVTRON MFG

DESIGN	ZNECEK	DATE	6/8/00
CHECKED	ZNECEK	DATE	5/12/00
APPROVED	R MITCHELL	SCALE	NONE
MODEL K580			

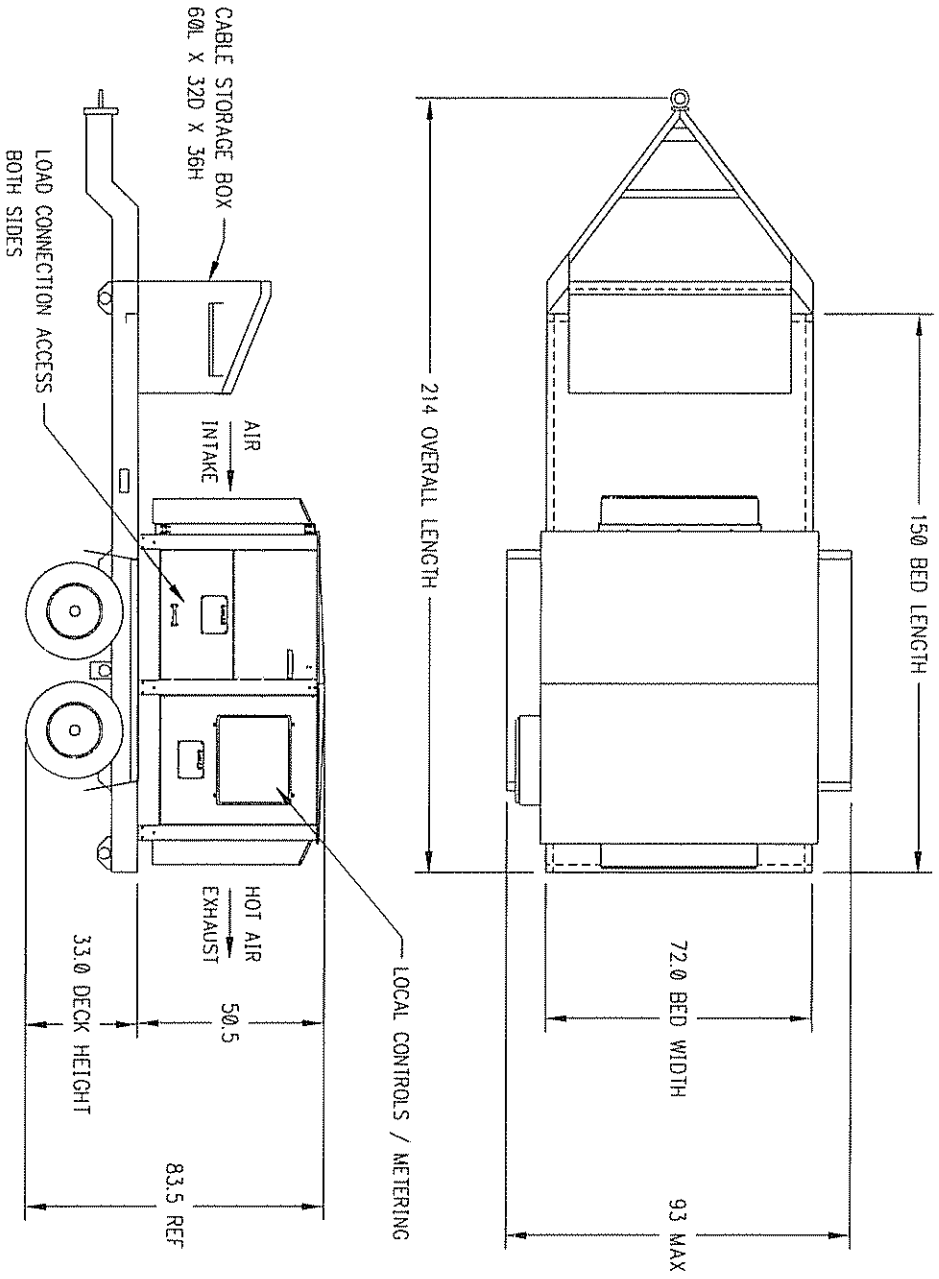
FOR APPLICATION ENGINEERING USAGE ONLY

AVTRON MANUFACTURING, INC.
 INDEPENDENCE, MO

TRAILER MOUNTED
 LOAD BANK SYSTEM

DRAWING NUMBER
 SB3054

OUTLINE DRAWING



FOR APPLICATION ENGINEERING USAGE ONLY