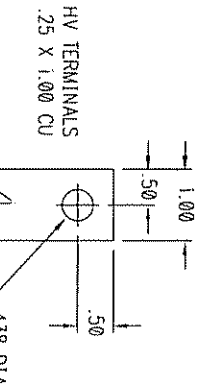
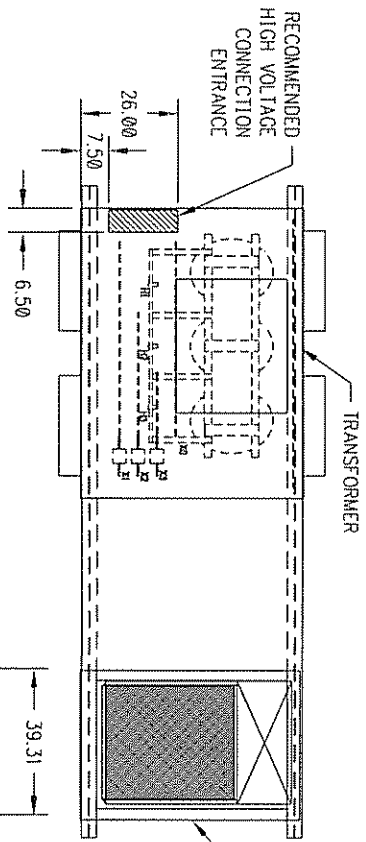
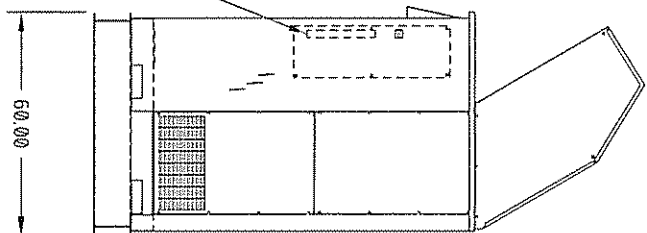
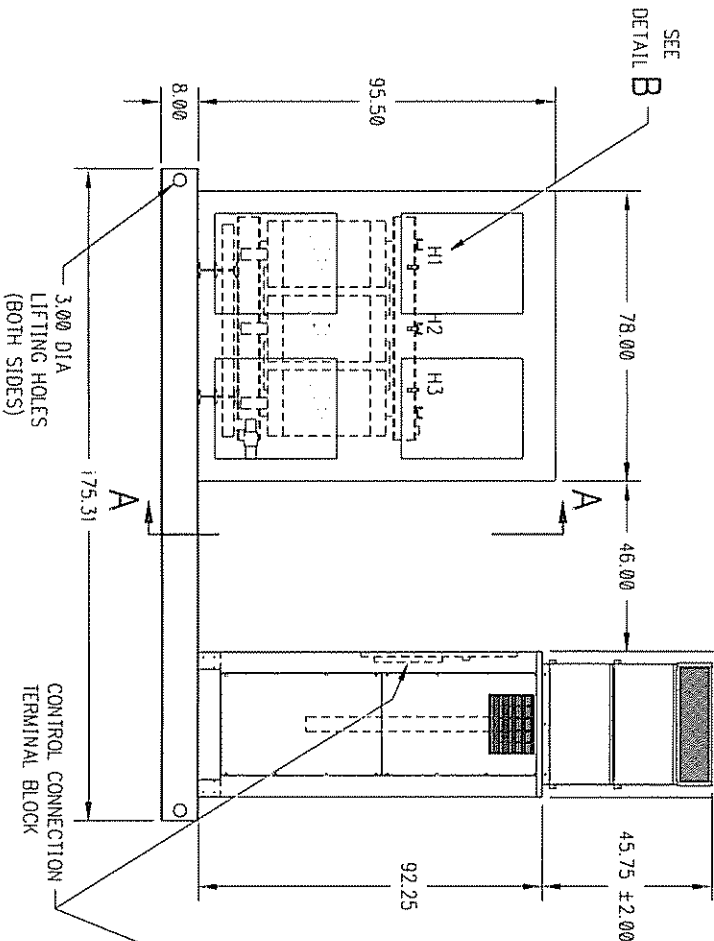


**AVTRON MODEL K875A-MV
OUTDOOR MEDIUM VOLTAGE LOAD BANK
OUTLINE DRAWING SET**



DETAIL B
LINE CONNECTIONS



FOR APPLICATION ENGINEERING USAGE ONLY

2. ALL DIMENSIONS ARE APPROX.
1. WEIGHT: 9,200 LBS APPROX
NOTES:

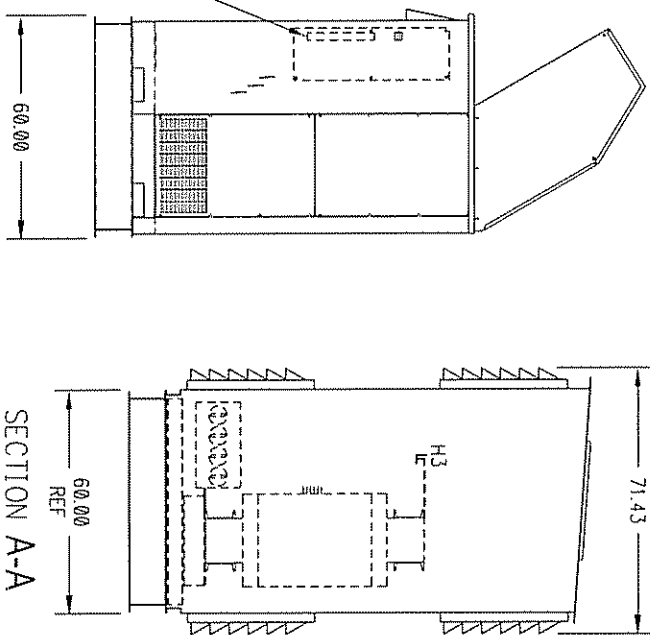
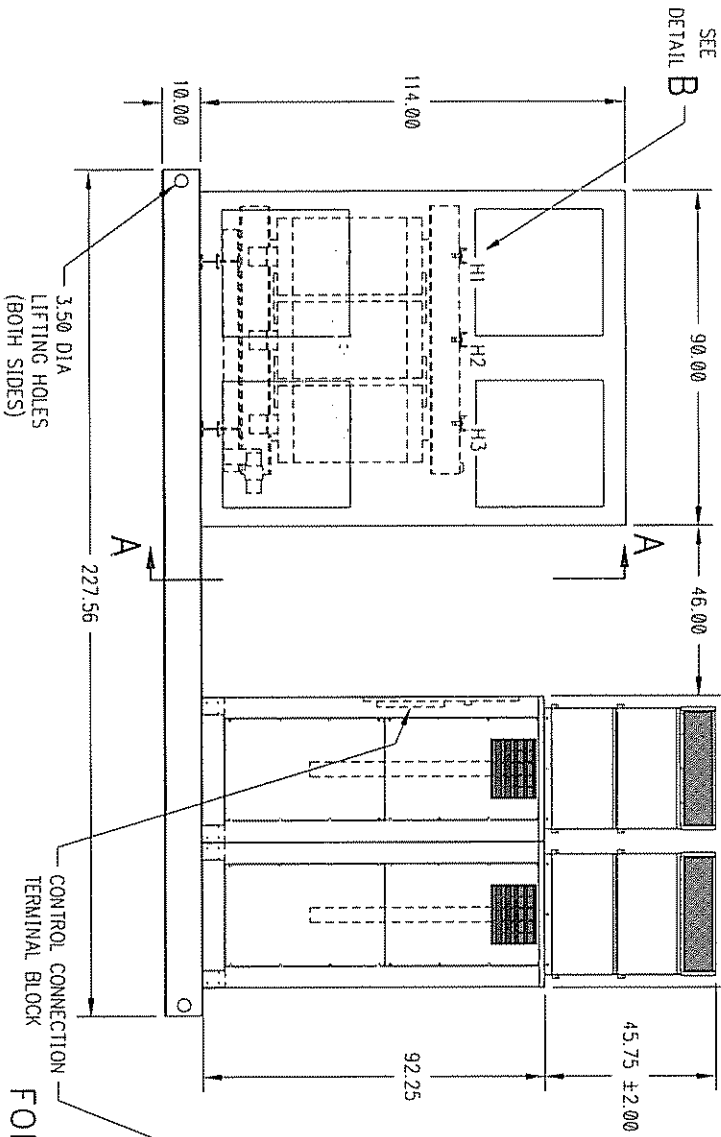
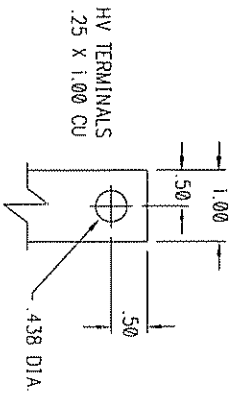
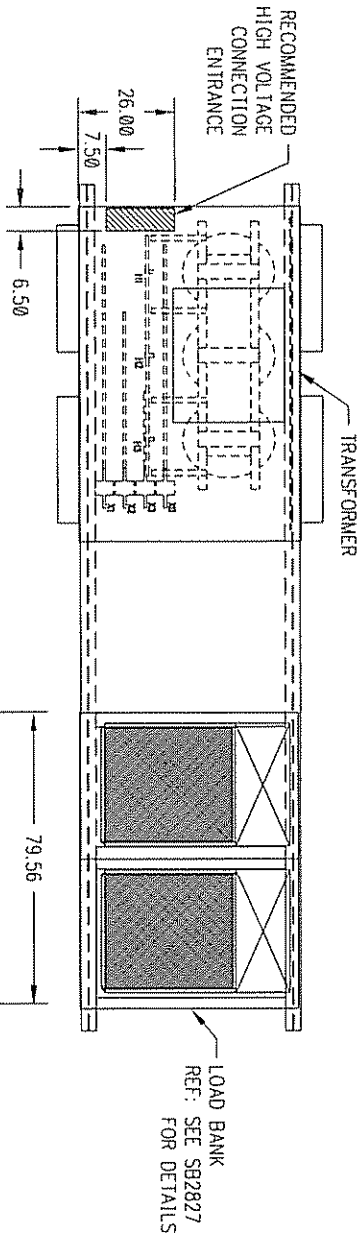
THIS DOCUMENT CONTAINS PROPRIETARY INFORMATION OF AVTRON MFG. INC. AND MAY NOT BE DISCLOSED TO OTHERS OR USED FOR MANUFACTURING PURPOSES WITHOUT THE WRITTEN CONSENT OF AVTRON MFG.

ECN NO.	REV	CHANGED BY	DATE	CHKD
	A	REMOVED FUSE AT X0	JL/AUTO/03/28/95	DKOZAR
		CHANGE		OK'D

DRAWN	JL/AUTO	DATE	8-16-02
CHECKED	JL/AUTO	DATE	8-16-02
SCALE	KUK	SCALE	1/32

AVTRON MANUFACTURING, INC.
LOAD BANK SYSTEM
1000 KVA

DRAWING NUMBER
SB3265
SHEET 1 OF 1
ONLINE DRAWING



FOR APPLICATION ENGINEERING USAGE ONLY

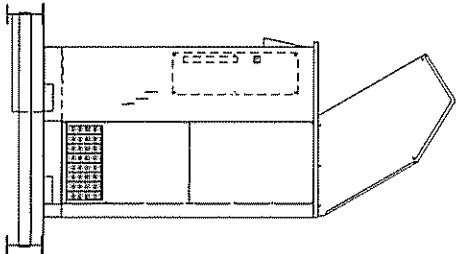
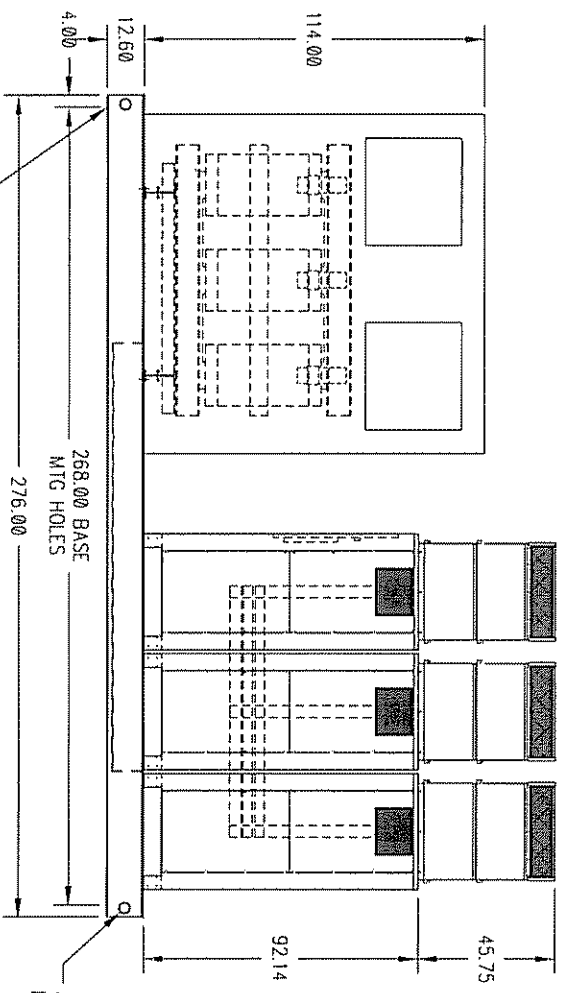
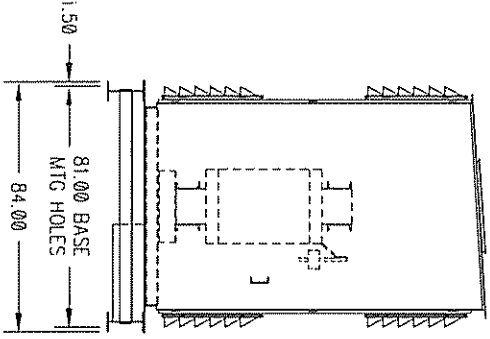
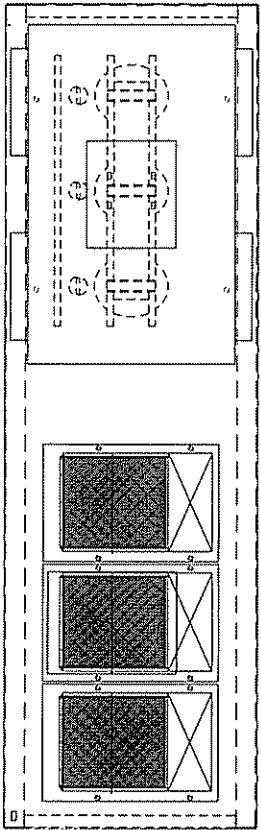
2. ALL DIMENSIONS ARE APPROX
1. WEIGHT: 13,500 LBS APPROX

THIS DOCUMENT CONTAINS PROPRIETARY INFORMATION OF AVTRON MFG, INC. AND MAY NOT BE DISCLOSED TO OTHERS OR USED FOR MANUFACTURING PURPOSES WITHOUT THE WRITTEN CONSENT OF AVTRON MFG.

ECN NO	REV LET	CHANGE	QC'D	Q&D
--------	---------	--------	------	-----

DATE	BY	CHECKED	APPROVED
2-20-02	JFL/AUTO	JFL/AUTO	KUK
SCALE			
1/32			

<p>AVTRON MANUFACTURING, INC. INDEPENDENCE, OH</p> <p>LOAD BANK SYSTEM 2000 KVA</p>	<p>DRAWING NUMBER SB3218</p> <p>SHEET 1 OF 1 OUTLINE DRAWING</p>
---	--



1.25 DIA 4 HOLES IN BOTTOM OF FRAME AT 268.00 x 81.00 MOUNTING CENTERS

3.50 DIA THRU FOR LIFTING

FOR APPLICATION ENGINEERING USAGE ONLY

2. ALL DIMENSIONS ARE APPROX.
 1. WEIGHT: ----- LBS APPROX

THIS DOCUMENT CONTAINS PROPRIETARY INFORMATION OF AVTRON MFG., INC. AND MAY NOT BE DISCLOSED TO OTHERS OR USED FOR MANUFACTURING PURPOSES WITHOUT THE WRITTEN CONSENT OF AVTRON MFG.

ECN NO	REV	CHARGE	CHCD	CH'D

DATE	DRAWN	DATE	SCALE
2-11-05	J.FLAUTO	2/14/05	NONE

AVTRON MANUFACTURING, INC.
 INDEPENDENCE DR.
 LOAD BANK SYSTEM
 3200 KVA

DRAWING NUMBER
 SB3526
 SHEET 1 OF 1
 OUTLINE DRAWING