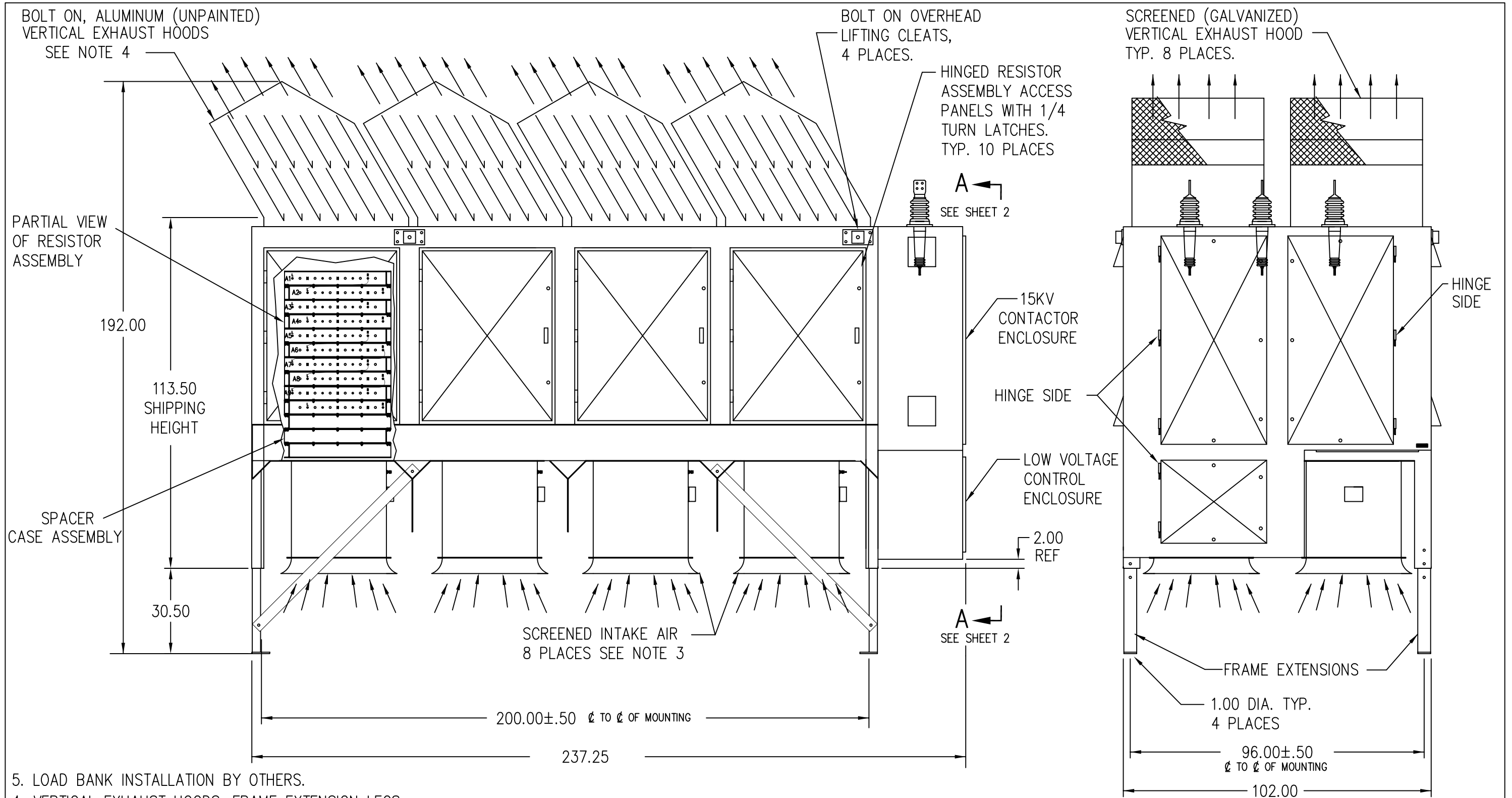


**AVTRON K922A  
MEDIUM VOLTAGE LOAD BANK  
OUTLINE DRAWING SET**



- 5. LOAD BANK INSTALLATION BY OTHERS.
- 4. VERTICAL EXHAUST HOODS, FRAME EXTENSION LEGS AND FAN INTAKE BELLS TO BE FIELD INSTALLED.
- 3. LOAD BANK TO BE ELEVATED USING FRAME EXTENSION LEGS TO ALLOW UNOBSTRUCTED INTAKE AIR. EXTENSIONS PROVIDED BY AVTRON.

2. ALL DIMENSIONS ARE APPROX. AND IN INCHES.  
 1. WEIGHT: APPROX. 16,900 LBS  
 NOTES:

THIS DOCUMENT CONTAINS PROPRIETARY INFORMATION OF AVTRON MFG., INC. AND MAY NOT BE DISCLOSED TO OTHERS OR USED FOR MANUFACTURING PURPOSES WITHOUT THE WRITTEN CONSENT OF AVTRON MFG.

| ECN NO. | REV LET. | CHANGE | CHG'D | CHK'D |
|---------|----------|--------|-------|-------|
|         |          |        |       |       |

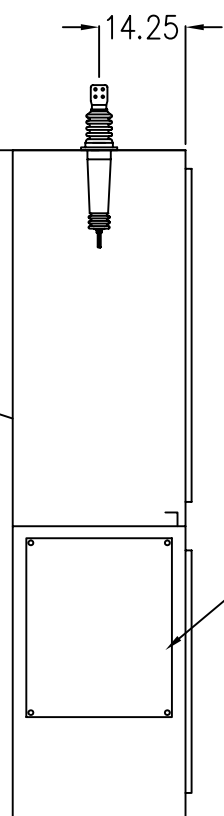
|          |          |       |          |
|----------|----------|-------|----------|
| DRAWN    | J.FLAUTO | DATE  | 10-29-04 |
| CHECKED  | J.FLAUTO | DATE  | 12/7/04  |
| APPROVED | D.KOZAR  | SCALE | NONE     |

**AVTRON** MANUFACTURING, INC.  
 INDEPENDENCE, OH  
 LOAD BANK, RESISTIVE

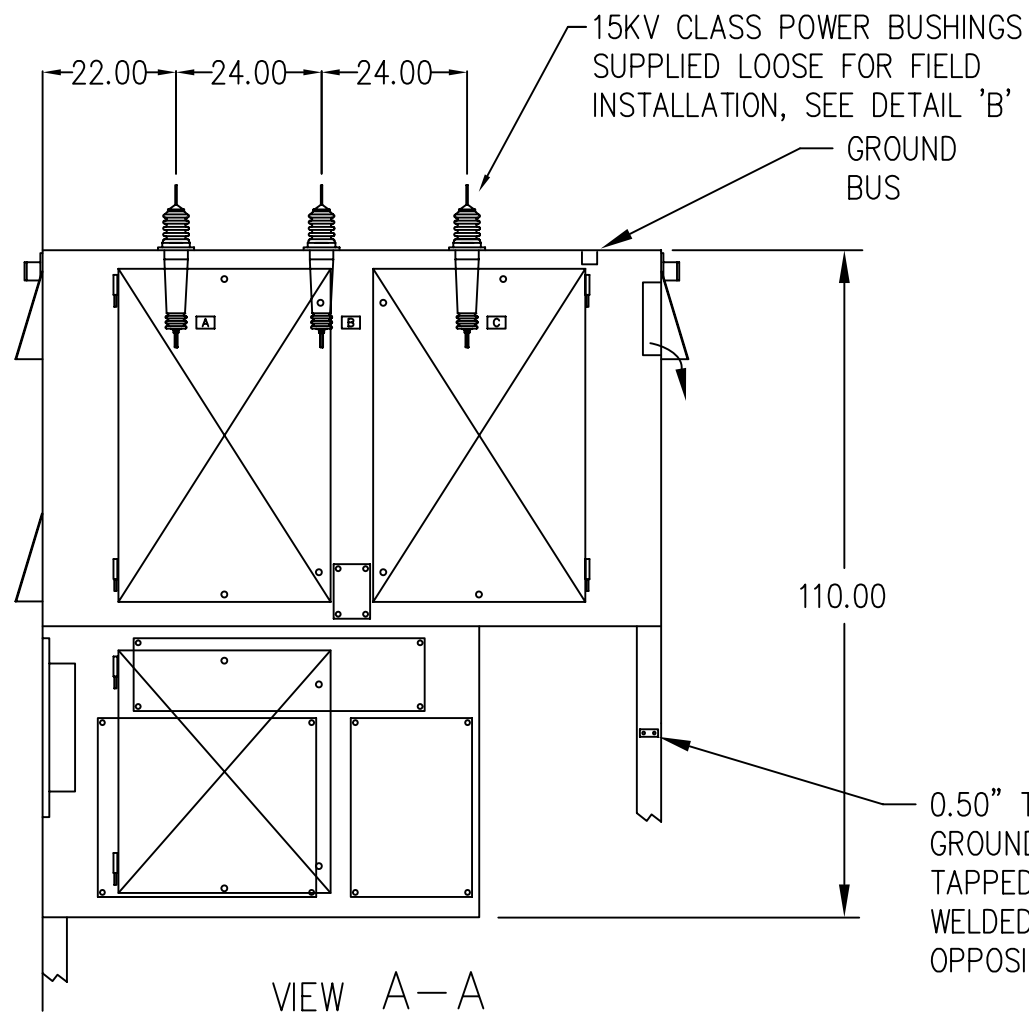
DRAWING NUMBER  
**SB3486**  
 SHEET 1 OF 2  
 OUTLINE DRAWING

FOR APPLICATION ENGINEERING USAGE ONLY

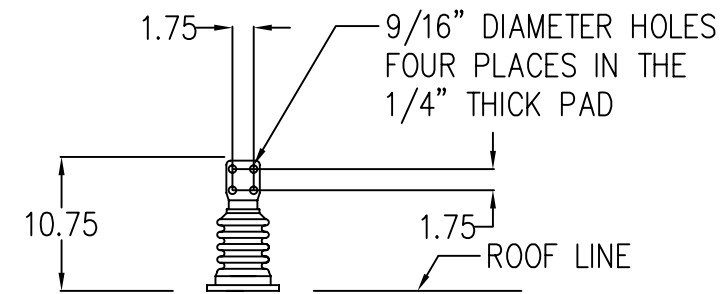
OVERHEAD LIFTING  
CLEATS, FOUR  
PLACES



CONTROL COMPONENT  
PANELS SHOWN IN  
HIDDEN LINES

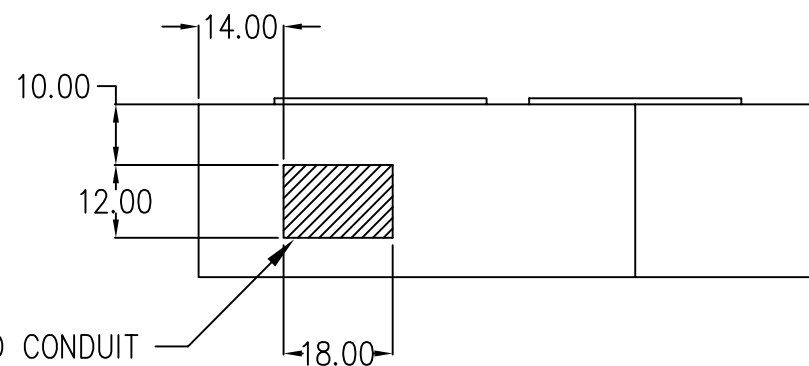


VIEW A-A



DETAIL 'B'  
BUSHING CONNECTION  
SCALE 2 TIMES SIZE

0.50" THICK STAINLESS STEEL  
GROUND PAD WITH TWO 3/8-18  
TAPPED HOLES ON 1.75" CENTERS  
WELDED TO FRAME. SECOND PAD ON  
OPPOSITE DIAGONAL CORNER.



RECOMMENDED CONDUIT  
ENTRY AREA FOR BLOWER  
AND CONTROL CONNECTIONS.

BOTTOM VIEW

FOR APPLICATION ENGINEERING USAGE ONLY

NOTES:

| ECN NO. | REV LET. | CHANGE | CHG'D | CHK'D |
|---------|----------|--------|-------|-------|
|         |          |        |       |       |

THIS DOCUMENT CONTAINS  
PROPRIETARY INFORMATION OF  
AVTRON MFG., INC. AND MAY  
NOT BE DISCLOSED TO OTHERS  
OR USED FOR MANUFACTURING  
PURPOSES WITHOUT THE WRITTEN  
CONSENT OF AVTRON MFG.



LOAD BANK, RESISTIVE

DRAWING NUMBER  
SB3486

SHEET 2 OF 2

SHEET