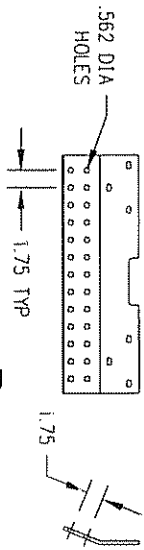
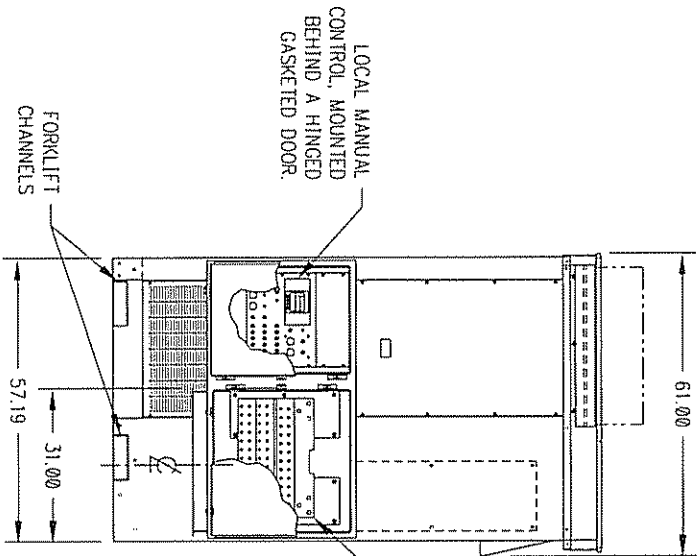


**AVTRON MODEL LTV
OUTDOOR TRAILER/TRAILER READY LOAD BANK
OUTLINE DRAWING SET**

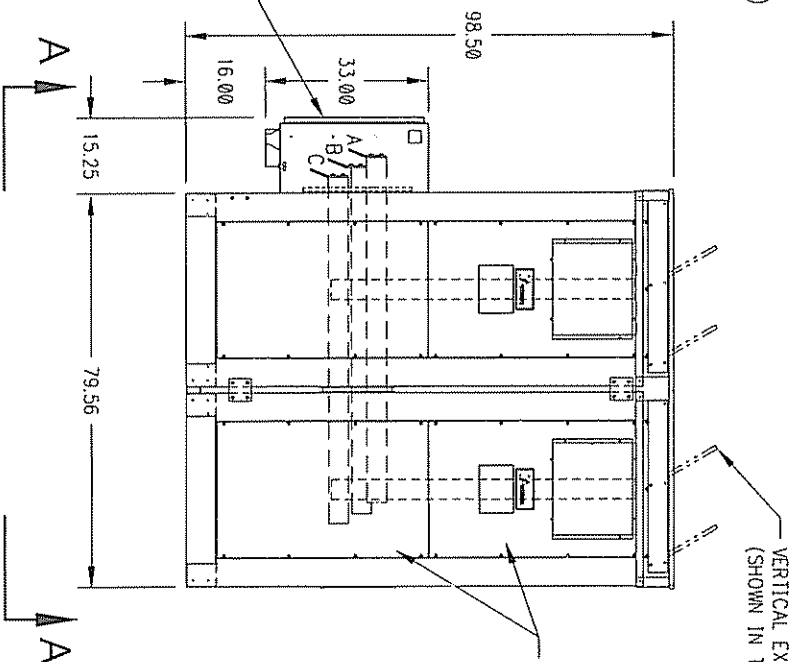


LOAD CONNECTION BUS BAR
TYP 3 PLACES (PH A, B & C)
SCALE: NONE



LOCAL CONTROL & LOAD CONNECTION ENCLOSURE CABLE ACCESS THROUGH BOTTOM OF ENCLOSURE

LOAD CONNECTION BUS BARS
SEE DETAIL B



VERTICAL EXHAUST HATCHES (SHOWN IN THE OPEN POSITION)

BOLT ON REMOVABLE PANELS FOR ACCESS TO LOAD CONTACTORS

FOR APPLICATION ENGINEERING USAGE ONLY

5. AS A GENERAL GUIDE, THE MINIMUM CLEARANCE REQUIRED FROM ANY OBSTRUCTION IS 6 FEET.
4. PROVIDE A CLEAR VERTICAL EXHAUST FIELD. REVIEW MANUAL FOR DETAILED INSTALLATION AND SITE CONDITIONS.
3. MAXIMUM INTAKE AIR TEMPERATURE IS 120°F. INTAKE AIR IS DRAWN IN FROM SIDES AND REAR OF UNIT.
2. ALL DIMENSIONS ARE APPROX. IN INCHES
1. WEIGHT: 3000 LBS APPROX

THIS DOCUMENT CONTAINS PROPRIETARY INFORMATION OF AVTRON MFG. INC. AND SHALL NOT BE DISCLOSED TO OTHERS OR USED FOR MANUFACTURING PURPOSES WITHOUT THE WRITTEN CONSENT OF AVTRON MFG.

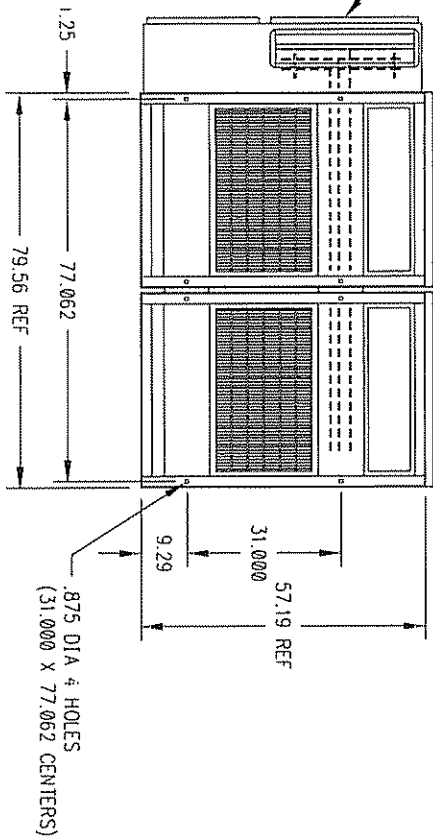
NO.	REV.	CHANGE	OR'D	OR'D
1	1			

DATE	2-20-02
DESIGN	J.FLAUTO
DATE	2-21-02
CHECKED	J.FLAUTO
DATE	3/5/4
APPROVED	D.KOZAR
MODEL	LTV

AVTRON MANUFACTURING, LLC
INDEPENDENCE, OH
LOAD BANK, OUTDOOR,
TRAILER READY, (2) TWO BAY

DRAWING NUMBER
SB3220
SHEET 1 OF 2
OUTLINE DRAWING

REF: LOCAL CONTROL & LOAD CONNECTION ENCLOSURE



VIEW A-A

FOR APPLICATION ENGINEERING USAGE ONLY

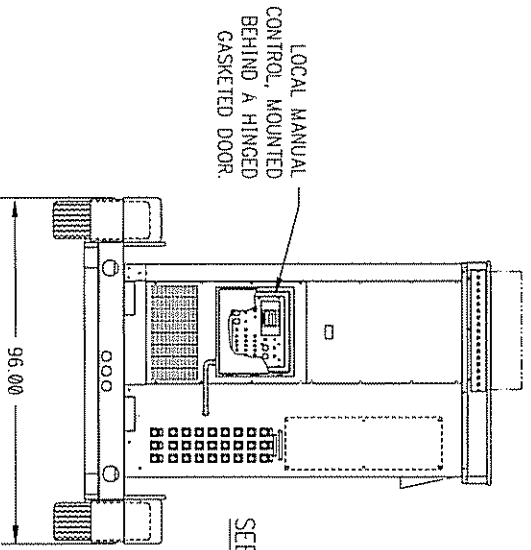
SEE SHEET 1 FOR NOTES

EQI NO.	REV	CHANG	CHKD

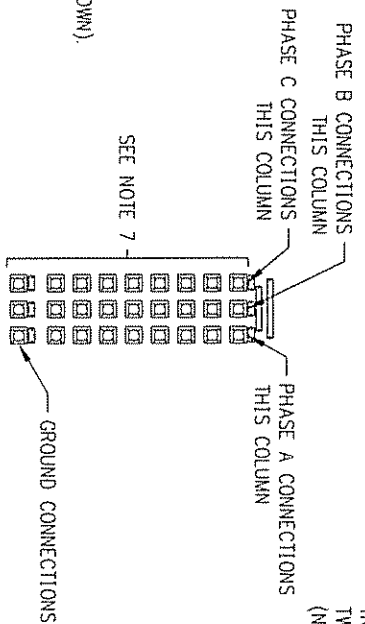
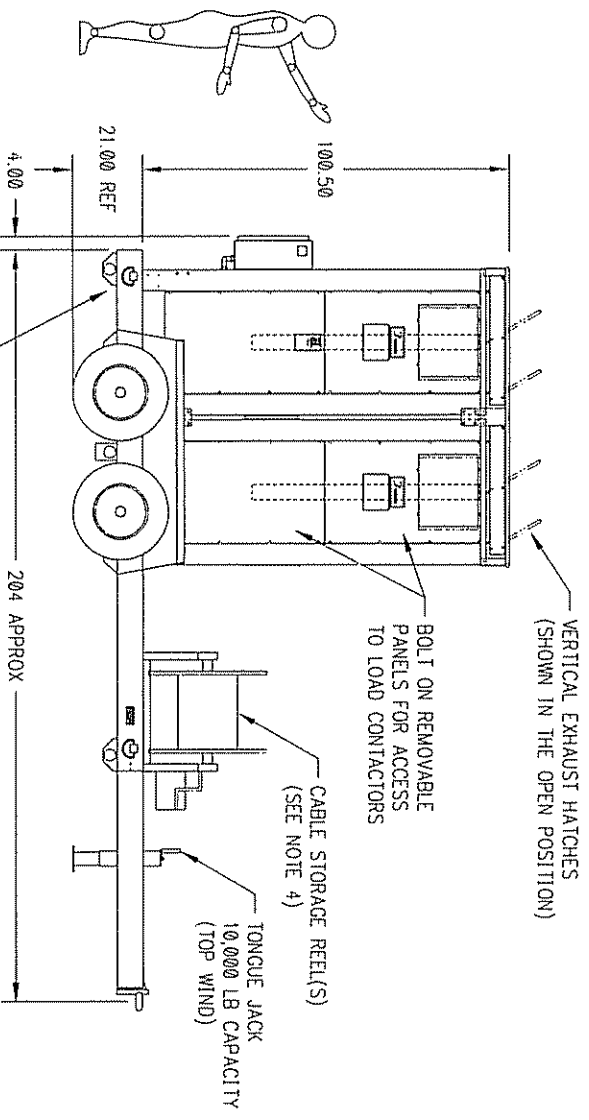
THIS DOCUMENT CONTAINS PROPRIETARY INFORMATION OF AVTRON MFG., INC. AND MAY NOT BE DISCLOSED TO OTHERS OR USED FOR MANUFACTURING PURPOSES WITHOUT THE WRITTEN CONSENT OF AVTRON MFG.

AVTRON MANUFACTURING, INC.
 INDEPENDENCE, OH
 LOAD BANK, OUTDOOR,
 TRAILER READY, (2) TWO BAY

DRAWING NUMBER
SB3220
 SHEET 2 OF 2
 OUTSIDE DRAWING



SEE DETAIL A



LOAD CONNECTION CAMLOCKS
SCALE: NONE

FOR APPLICATION ENGINEERING USAGE ONLY

7. PRIOR TO APPLYING ANY LOAD, CONNECT ALL EIGHT CAMLOCK CONNECTIONS FROM EACH PHASE AND THE THREE GROUND LOCATIONS. USE COPPER LOAD WIRING RATED AT 75°C MINIMUM. REPLACE PROTECTIVE CAPS WHEN NOT IN USE. REVIEW MANUAL FOR INSTALLATION, OPERATION AND MAINTENANCE DETAILS.
5. UNIT PROVIDED WITH TRAVEL AND STORAGE COVER (NOT SHOWN).
4. TRAILER REQUIRES LOAD CABLE OR STORAGE MINIMUM = 1300 LBS. BALLAST IN CABLE AREA FOR SAFE TOWING. MAXIMUM CABLE STORAGE CAPACITY = 1200 LBS. CABLE ON ONE REEL. CAPACITY = 2300 LBS. CABLE ON TWO REELS.
3. ALL DIMENSIONS ARE IN INCHES.
2. ALL DIMENSIONS ARE APPROX.
1. WEIGHT:
8700 LBS. APPROX. FULLY LOADED W/2 REELS
7500 LBS. APPROX. FULLY LOADED W/1 REEL
WEIGHTS VARY DEPENDING ON OPTIONS & CABLE LISTED WEIGHTS ARE FOR REFERENCE ONLY.
(10,000 LBS. GVWR)

THIS DOCUMENT CONTAINS PROPRIETARY INFORMATION OF AVTRON IFC, INC. AND MAY NOT BE DISCLOSED TO OTHERS OR USED FOR MANUFACTURING PURPOSES WITHOUT THE WRITTEN CONSENT OF AVTRON IFC.

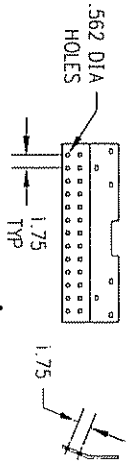
REV	DESCRIPTION	DATE
01	REVISED 2000 KW FROM TITLE	JFL/AUTO 2/17/07
02	CHANGE	JFL/AUTO 2/17/07

DATE	BY	CHECKED	APPROVED
10/18/04	Fockelmann	JFL/AUTO	J.W. EMERY
10/19/04			
1/32			

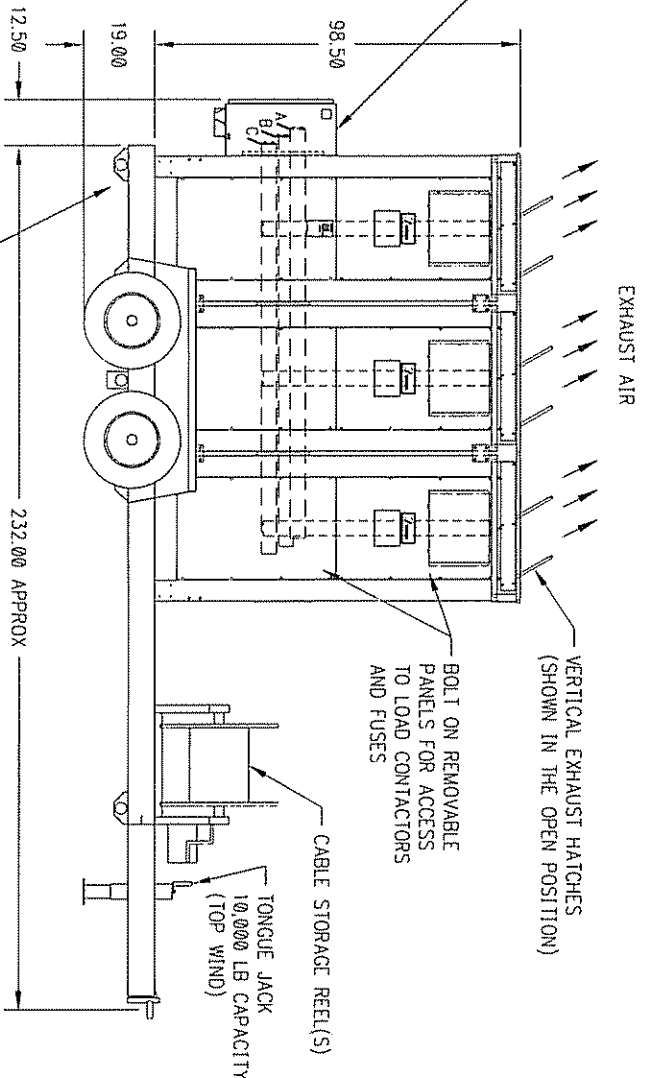
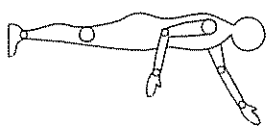
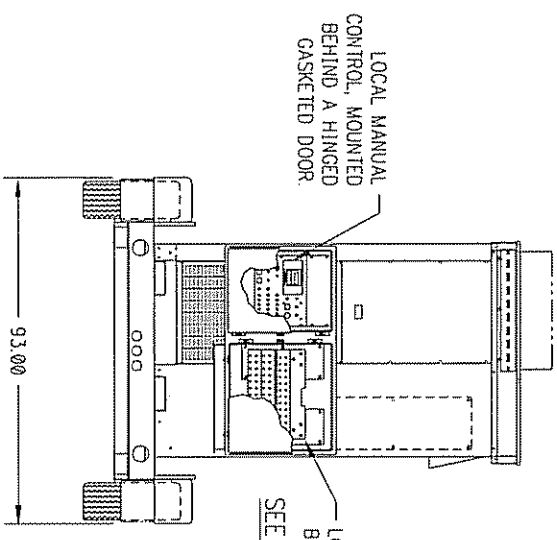
AVTRON MANUFACTURING, INC. TRAILER MOUNTED LOAD BANK SYSTEM

DRAWING NUMBER SB3483

OUTLINE DRAWING



DETAIL A
LOAD CONNECTION BUS BAR
TYP 3 PLACES (PH A, B & C)
SCALE: NONE



FOR APPLICATION ENGINEERING USAGE ONLY

6. REVIEW MANUAL FOR INSTALLATION, OPERATION AND MAINTENANCE DETAILS.
5. UNIT PROVIDED WITH TRAVEL AND STORAGE COVER (NOT SHOWN).
4. TRAILER REQUIRES LOAD CABLE OR STORAGE MINIMUM = 1300 LBS. BALLAST IN CABLE AREA FOR SAFE TOWING. MAXIMUM CABLE STORAGE CAPACITY = 1200 LBS. CABLE ON ONE REEL. CAPACITY = 2300 LBS. CABLE ON TWO REELS.
3. ALL DIMENSIONS ARE IN INCHES.
2. ALL DIMENSIONS ARE APPROX.
1. WEIGHT: 8,000 LBS. APPROX. W/2 REELS EMPTY AS SHOWN. (10,000 LBS GWR)

THIS DOCUMENT CONTAINS PROPRIETARY INFORMATION OF AVTRON MFG. INC. AND MAY NOT BE DISCLOSED TO OTHERS OR USED FOR MANUFACTURING PURPOSES WITHOUT THE WRITTEN CONSENT OF AVTRON MFG.

ECO	REV	CHANGE	CHGD	CHK'D
10	1			
10	1			

DRAWN: J.FLAUTO CHECKED: J.FLAUTO APPROVED: J.EMERY	DATE: 8-30-04 DATE: 8/31/04 DATE: 1/32	* AVTRON MANUFACTURING, INC. HINGERSBURG, VA	TRAILER MOUNTED LOAD BANK SYSTEM, 2500-3000 KW	GRANITE RUBBER SB3458 SH1 OF 1 OUTLINE DRAWING
---	--	--	--	---