

Thomas Miniature Couplings*

Thomas Miniature Flexible Disc Couplings

Material Specifications for Standard Couplings:

Hubs and center member: Aluminum alloy, anodized.

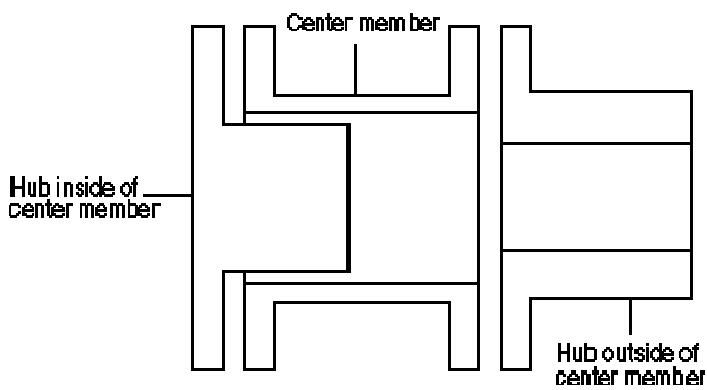
Rivets: Brass.

Washers: Brass.

Discs: Stainless Steel

Set Screws: 18-8 stainless steel, passivated.

Guide to Proper Designation of Hubs

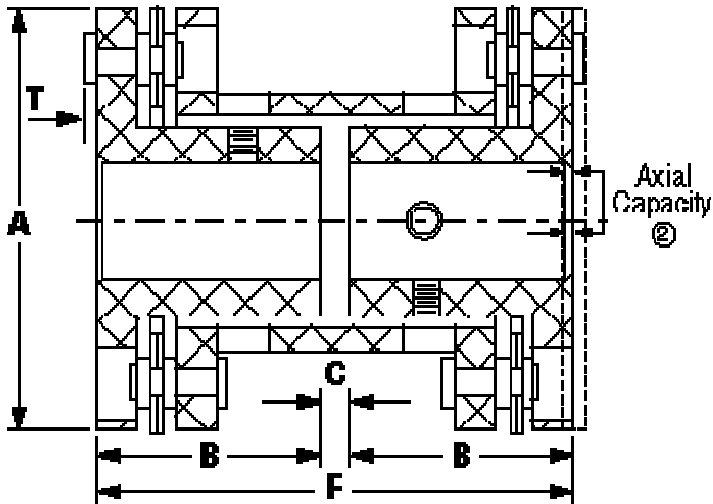


Style CC



This coupling has both hubs inverted and is designed to fit shafts normally encountered at a given torque range. It is ideal for use where space limitations require close coupling of the shafts.

General Dimensions (inches)						
Size No.	A	B	C	F	T	Torque Capacity (lb. -in.)
12	1/2	1/4	1/32	17/32	0.018	1.1
18	3/4	3/8	1/16	13/16	0.023	2.2
25	1	1/2	1/16	1 1/16	0.025	4.7
37	1 7/16	11/16	1/8	1 1/2	0.035	19.0
50	1 3/4	15/16	1/8	2	0.045	75.0
62	2 1/4	1 1/16	1/8	2 1/4	0.060	300
75	2 1/2	1 3/16	1/8	2 1/2	0.060	440
100	3	1 3/8	1/4	3	0.060	700



Torque capacities are based on smooth drives with moderate torque fluctuations. Reduce ratings to 1/3 the value shown for severe applications such as indexing drives where torque reversals occur.

All Thomas disc couplings meet NEMA frame sleeve bearing motor specifications without modification or the addition of end-float restricting devices.

*Information from Rexnord's Catalog "Thomas Flexible Disc Couplings"

Rexnord Corporation
 Thomas Coupling Division
 Warren, PA, USA
 www.rexnord.com
Phone: 814-723-6600